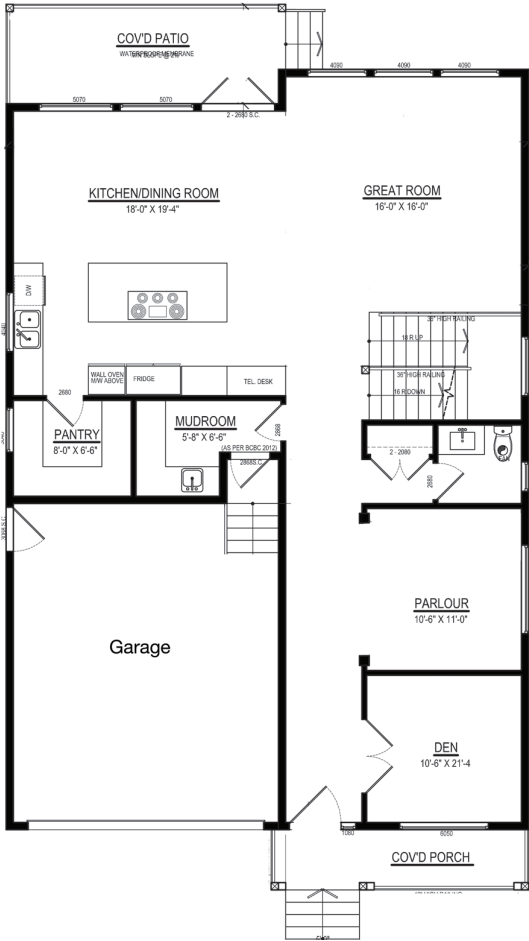


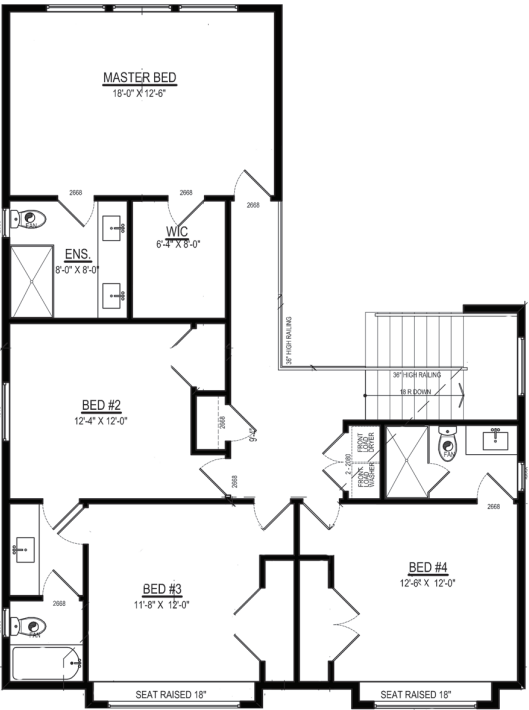
HOME #39

PARKPLACE

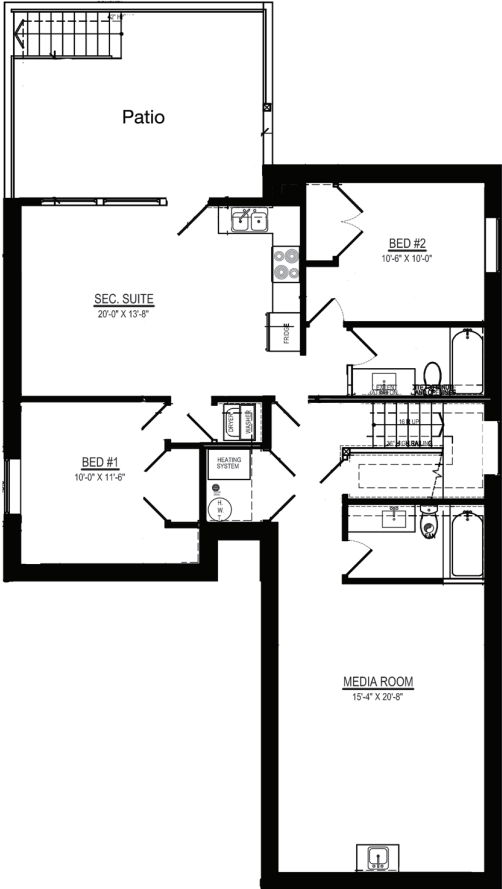
— AT FLEETWOOD —



Main Level
1354 sq. ft.



Upper Level
1208 sq. ft.



Basement Level
1354 sq. ft.

The builder reserves the right to make modifications to floor plans as necessary. E.&O.E.

PARKPLACE

— AT FLEETWOOD —

YOUR NEW HOME AT PARK PLACE INCLUDES THESE FEATURES

First Glance

- Beautiful curb appeal and detailed exteriors with Hardie Plank siding
- Professionally designed and low maintenance landscaping
- Fully fenced backyard with six foot cedar panels and gate
- Spacious garage with remote opener

Beautifully Appointed Interiors

- Large open layouts for maximum use of space
- Premium laminate flooring throughout the main floor
- A choice of three professionally designed colour schemes
- Contemporary raised panel interior doors
- Elegant wood baseboards and door casings
- Open staircase with glass & wood handrail
- Attractive, contemporary interior lighting design
- Two inch windows blinds and screens (Sheer blind upgrade available)

Modern Kitchen

- Premium cabinets with 'soft-close' drawers and doors and elegant crown moulding
- Rich quartzite countertops
- Oversize waterfall island with convenient outlets
- Stainless steel Jenn Air appliances with 36" range, wall oven and microwave
- Vented hood fan over range
- Double bowl stainless steel under mount sink with garburator roughed-in
- Full height hand set tile backsplash
- Spacious walk-in pantries (plan permitting)
- Under cabinet lighting
- Spice kitchen upgrade available

Luxurious Bathrooms

- Quartzite countertops
- Hand set ceramic tiles in shower & bathtub surrounds
- Privacy glass in all bathroom windows
- Pressure-balance valves on all showers
- Glass ensuite shower doors, tile shower base and deluxe shower rain head
- GR circuits in all bathrooms
- Jetted shower in master ensuite
- Soaker tub (available in select units)
- Steam shower (available in select units)

Quality Construction

- TJI Joists for silent floors
- Glued, nailed and screwed down floors for maximum stability
- 2 coats of high quality and easy maintenance latex paint
- Maintenance free vinyl windows
- Fully drywalled garage with smooth walls and textured ceiling
- Insulated steel garage doors with raised panels (glass not insulated)
- Attractive fiberglass front entry door provides lasting durability
- Superseal foundation wrap with water penetration warranty
- Asphalt shingle roof with 30 year life
- Full volume built in gutters and down sprouts
- 2-5-10 year warranty with Travelers Guarantee

Heating, Plumbing and Electrical

- High efficiency forced air furnaces
- Gas hot water tank
- Heat pump (optional)
- High Efficiency Electric fireplace in Great Room
- 200 Amp service to the house
- Two exterior electrical outlets
- Convenient exterior hose bib

Thoughtful Details

- Roughed-in security system
- Roughed-in built-in vacuum system
- State-of-the-art direct smoke alarms on each floor
- Full length quartzite counter in the laundry room with energy efficient appliances
- Custom white melamine shelving in master closet
- Built-in entertainment unit shelving in great room
- Roughed-in 5.1 surround in media room
- Tasteful use of moulding
- Oversize patios with BBQ quick connect (Optional)
- Vaulted patio (Plan Permitting)
- Concrete sidewalk and steps to the backyard
- Built-in speakers (Optional)
- Hide A Hose (Optional)
- Pre-wired for Shaw Cable (Telus not available)
- *Developer reserves the right to change features without notice.*